



REMOTE WATER WESTERN AUSTRALIA

WASTEWATER TREATMENT SYSTEMS



ecoFarmerTM
WASTEWATER TREATMENT SOLUTIONS



TM

ecoFarmer
WASTEWATER TREATMENT SOLUTIONS



THE TRUSTED NAME IN BIOLOGICAL SBR AND MBR WASTEWATER TREATMENT DESIGN.

After working on numerous projects in remote locations around Australia, we noticed a gap in the wastewater treatment industry. What our clients needed was a high quality, turn-key waste water treatment solution that could be seamlessly transported to even the most isolated destinations. As Australia's trusted wastewater treatment solution providers, we went to the drawing board to create an ideal range of systems.

Introducing the EcoFarmer series - The containerised, 'PLUG AND PLAY' wastewater treatment plants are designed for rapid deployment, providing ongoing wastewater treatment solution whilst also maintaining environmental site compliance.

Each system is designed and built to cater beyond the unique needs of our valued clients, based in remote working camps across Australia and the Pacific. The EcoFarmer provides a cost-effective wastewater treatment solution, catering to the mining, gas and oil, disaster relief, defence and construction industries.

Utilising a durable and robust modular platform, the EcoFarmer includes a comprehensive 20 year structural guarantee ensuring the long-term asset protection of your wastewater treatment investment.

The EcoFarmer is available in two standard sizes, 50 or 250, however multiple modular designs provide the perfect solution catering for larger permanent camp facilities. Our systems have been tried and tested throughout Australia and exceed the expectations of all state and territory legislation.



The EcoFarmer is optimised for **seamless transportation** by any rail, shipping or freight service. This is a result of the external design of the containerized unit to ensure the system is ideally transportable to **regional and isolated destinations**, where deployment is often difficult.

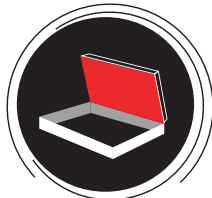


The EcoFarmer has been designed to ensure **rapid commissioning on-site**. Simply connect to power via an electrical plug of your choice and connect to water input and output by way of camlocks, or a customised hoses solution.

ecoFarmer
**WASTE WATER
 TREATMENT
 PLANTS ARE
 AS SOLID AS
 A ROCK**



TURNKEY
 solution



ROBUST HATCH



EASY TRANSPORTATION
 with ISO high cube design



**ENGINEERED +
 CERTIFIED**
 design



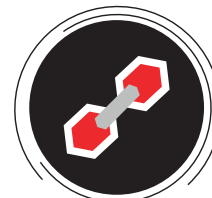
HMI PLC
 Control System



BIOLOGICAL TREATMENT
 approved by legislation



MODULAR DESIGN
 allows flexibility to expand



SOLID CONSTRUCTION
 6mm thick walls + 6mm thick floor

FEATURES



ISO container design allows seamless transportability



Interconnection provisional flanges for rapid set-up



Robust steel construction to exceed Australian standards and harsh environmental conditions



Proprietary air injection and mixed phase



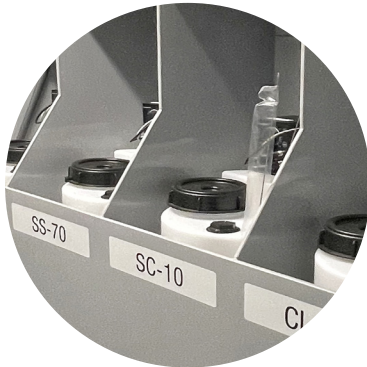
Premium quality fittings and instrumentation



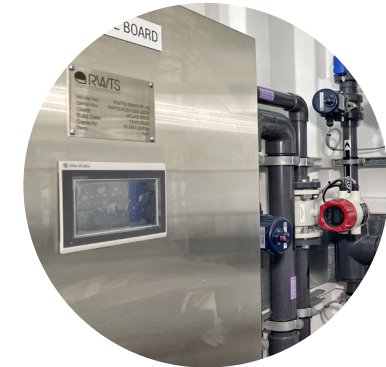
Grundfos wastewater handling pump



External mixer aerator pump combination



Durable chemical bunding to ensure the utmost safety



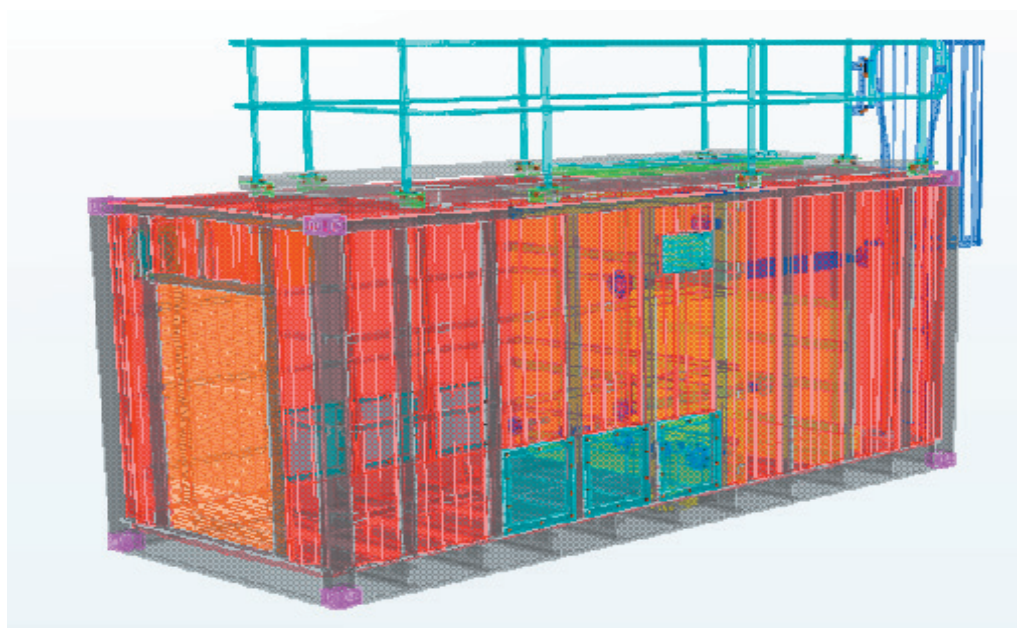
Fully automated control with Allen-Bradley HMI PLC

OVERVIEW DESIGN

Model	Treated Capacity (per day)	Estimated Persons	Treated Effluent	Footprint L x W x H (m)	Weight (kg)
ECO50	2-10m ³	15-50	A, B, C	6 x 2.4 x 2.8	6,907
ECO250	10-50m ³	50-280	A, B, C	12 x 2.4 x 2.8	11,000

Final Effluent Parameters	Class C	Class B	Class A	Enhanced Nutrient Removal (ENR)
Total suspended solids TSS	30	30	10	< 5
BOD	20	20	5	< 5
E.coli without coliforms	1000	150	10	< 10
Total chlorine	NA	0.5 - 1.5	0.5 - 1.5	0.5 - 1.5
pH	7.5 - 8	7.5 - 8	7.5 - 8	7.5 - 8
Conductivity	1600	1600	1600	1600
Total Nitrogen	60	20	20	< 5
Total Phosphorus	10	10	10	< 5
Turbidity	NA	NA	< 2	< 2

ENGINEERING MODELLING SOFTWARE USED FOR STRUCTURAL DESIGN



OVERVIEW

DESIGN

<i>Key Features</i>	
Engineering	Process and structural third party RPEQ certification
Roof Design	6mm plate steel with pitched roof
Floor Design	6mm plate steel
Wall Design	6mm formed pressed steel plate with external RHS vertical strengthening support
Paint Specification	External – Paint in Royal blue semi gloss enamel coating, sandblasted to SA 2 and primed prior to coating Internal – Paint light grey matt finish epoxy marine coating, sandblasted to SA 2 and primed prior to coating
Holiday Spark Testing	Spark testing procedure is performed to test painted surface
Hatches	6mm aluminium pressed and folded lids for weight saving and corrosion resistance, grab handle and locking point with simplistic hinge design
Piping	Steel pipe spools for container penetration, Grey UPVC sch 80 pipe work
Standards	Built to the electrical AS3000 and plumbing AS3500 standards
Electrical	Quality and brand leading hardware, stainless steel electrical switch board
Interface	Allen Bradley HMI and PLC system, coding software completed within RWTS automation experts
Flow monitoring	Full bore mag flow fluid meters measuring raw water in and treated water out to dispersal field

Pumping	Quality branded pumps and mechanical motors supported within Australia
Level Control	Level transmitting instruments for tank capacity
Pressure Instruments	Pressure transducers for monitoring and display
Chemistry	Venturi inducted chemical dosing through vacuum solenoid valving

<i>Optional Features</i>	<i>ECO Series</i>
Communication	Full remote telemetry access
SMS	SMS dialler functionality for plant fault
Instrumentation	High level instrumentation package available
Disinfection	Recirculated chlorine monitoring and dosing system
Filtration	Glass media and or ultrafiltration back-end polishing packages
Handrail system	Powder coated safety yellow

MANUFACTURING OPERATIONS

The EcoFarmer is not your ordinary containerised wastewater treatment system. Engineered to last a lifetime and certified to exceed quality, environmental and safety standards, these systems are built from the ground up using the highest calibre steel construction to guarantee durability.

All EcoFarmers are manufactured in accordance with certified procedures and processes. The tanks are manufactured at a state-of-the-art production facility in Thailand which feature a wide array of modern manufacturing equipment including:

- Laser and Plasma Cutting Machines
- CNC Lathes
- Cutting / Milling and Turning Equipment
- Dedicated blasting and painting booths providing a quality industrial finish.

Our integration of the production and assembly operations provides our valued clients with a far superior wastewater solution.



THINK GREEN - THINK ECOFARMER



A number of green physical and chemical processes are employed to clean and remediate the environment without generating hazardous substances or toxic by our products.

HIRE

For a **flexible** and **immediate solution**, our EcoFarmer range is available for hire. Ensure **consistent, reliable operation** and optimal performance without the significant upfront investment.

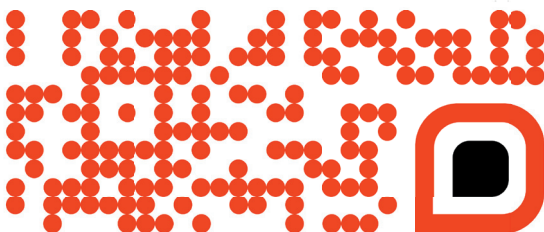
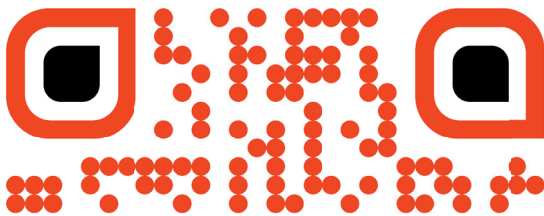
Get in touch to discuss a tailored rental approach today.



20
YEAR

STRUCTURAL GUARANTEE

We build our systems to last, even in the harshest remote locations. That's why RWWA offers a 20-year structural guarantee on all EcoFarmers. Choose guaranteed durability to reap the long-term benefits of your investment.



REMOTE WATER WESTERN AUSTRALIA

CONTACT INFORMATION

Head Office:
1964 Albany Highway
Maddington WA 6109

P: 08 9493 8290
E: sales@remotewwa.com.au
W: www.remotewwa.com.au